



# CareerSource Broward

Rapid Response  
Presentation  
June 13th, 2018



# Please Fill out Registration Form and Return before or after session.



## Rapid Response Registration Form

This information is placed in a secure system accessed only by authorized personnel, and is used only for state and federal labor market statistics. It is a breach of federal and state law if any of this information is compromised. Once your Employ Florida jobseeker registration is completed, an email with your unique username and password, along with login instructions will be sent to you.

First Name: \_\_\_\_\_ Middle Initial: \_\_\_\_\_ Last Name: \_\_\_\_\_

Social Security Number: \_\_\_\_\_ - \_\_\_\_\_ - \_\_\_\_\_ E-mail Address: \_\_\_\_\_

Street Address: \_\_\_\_\_

City: \_\_\_\_\_ State: \_\_\_\_\_ ZIP: \_\_\_\_\_ County: \_\_\_\_\_

Telephone #: \_\_\_\_\_ Date of Birth: \_\_\_\_/\_\_\_\_/\_\_\_\_ Gender:  Male  Female

Type of business worked in: \_\_\_\_\_

Are you receiving Reemployment Assistance?  Yes  No What is your desired job title? \_\_\_\_\_

Are you authorized to work in the United States? Males: Have you registered with the Selective Service?  
 Yes  No  Documented Exemption

Citizenship:  Citizen of U.S. /U.S.Territory  U.S. Permanent Resident (please give information below)

Alien Registration Number: \_\_\_\_\_ Alien Registration Expiration Date: \_\_\_\_\_

Are you currently enrolled in school?  Yes  No Employment Status:  Employed  Unemployed

Highest Education Level Completed:  High School/GED  Vocational School  Some College  Bachelor's Degree  
 Master's Degree  PhD/Specialized Degree

Are you in the military, a veteran, or the spouse of a veteran?  
 Yes, I am in the military, a veteran, or the spouse of a veteran.  
 No, I am not in the military, a veteran, or the spouse of a veteran.

Are you the spouse/dependent of someone in the active-duty military service, or Florida National Guard or Reserves?  
 Yes, I am the dependent of someone in active military service.  
 No, I am not the dependent of someone in active military service

Within the last 12 months, have you received a notice of termination or layoff from your job or received documentation that you are separating from military service?  
 Yes, I am in the military, a veteran, or the spouse of a veteran.  
 No, I am not in the military, a veteran, or the spouse of a veteran.

Have you performed work as a farm worker or food processor, including packing houses, nurseries, or orchards, for at least 25 days within the past 12 months?  Yes  No

In the past 6 months, has your household received Temporary Assistance for Needy Families (TANF) payments?  Yes  No

Have you been determined eligible for or received Supplemental Nutritional Assistance Programs Assistance (SNAP Formerly known as Food Stamps)?  Yes  No

Have you received General Assistance Payments?  Yes  No

Number of individuals living in your household? \_\_\_\_\_ Total income earned within the last 6 months? \_\_\_\_\_

An equal opportunity employer/program. Auxiliary aids and services are available upon request to individuals with disabilities.



# Three Centers in Broward County

- CSBD North
  - 4941 Coconut Creek Parkway  
Coconut Creek, FL 33063  
(954) 969-3541

- CSBD Central
  - 2610 West Oakland Park Boulevard  
Oakland Park, Florida 33311  
(954) 677-5555

- CSBD South
  - 7550 Davie Road Extension  
Hollywood, Florida 33024  
(954) 967-1010



# CareerSource Broward



- Resource Center - Your Place of Business while Job Searching
  - Individual Stations
    - Personal Computers
    - Internet Access
  - Laser Printers
  - Copiers
  - Telephones
  - Fax Machine

All at NO COST to you!



# CareerSource Broward

- Online Access
- [www.careersourcebroward.com](http://www.careersourcebroward.com)
  - Career Services Tab – provides links to information and services
  - **Orientation Videos – click picture button on home page for access to online videos; watch videos at any time**
  - Money for Training – connects you to approved schools and training; click link and complete online application before meeting a CareerSource Success Coach



# It's Your Move

- Employ Florida
    - [www.employflorida.com](http://www.employflorida.com)
      - Account Registration
      - Resume Posting
      - Skills Assessments
      - Career Information
      - Online Job Search
- [www.indeed.com](http://www.indeed.com)  
[www.simplyhired.com](http://www.simplyhired.com)  
[www.careerbuilders.com](http://www.careerbuilders.com)



# It's Your Move

- Career Success Seminars
  - Job-Readiness Classes
    - Career Pathways
    - Resume Workshop
    - Interview Skills
    - Professional Placement Network (PPN)
  - Computer Workshops
    - Basic PC
    - Employ Florida Basics
    - Social Media Networking



# It's Your Move

- Social Networking
  - Facebook
    - [www.Facebook.com/careersourcebroward](http://www.Facebook.com/careersourcebroward)
  - Twitter
    - [www.Twitter.com/CareerSourceBD](http://www.Twitter.com/CareerSourceBD)
  - LinkedIn
    - Company search > CareerSource Broward
- Social Media Networking
  - The Hidden Job Market
  - Tools and Tips to Succeed
    - Online Brand Creation
    - Relationship-Building





# It's Your Move



- Start your job search today
  - Job search is a full-time job
  - Network! Network! Network!
  - Don't sit idle and let your \*Reemployment Assistance expire
  - TORQ
    - Transferable
    - Occupation
    - Relationship
    - Quotient

# It's Your Move



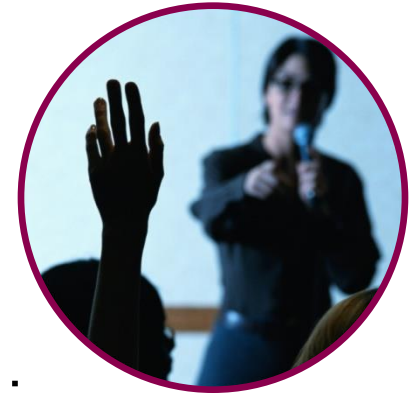
- Placement Department Services
  - Individual Career Counseling
  - Skills Assessment
  - Job Search and Referrals
  
- Individual Training Services
  - Success Coach Support
    - On-the-Job Training (OJT) Services
    - Individual Training Plans

# It's Your Move

- Skills Upgrade
  - Individual Training Accounts (ITAs)
    - No Jobs in Field
    - Requiring Higher Skill Level
    - Short-term Training
    - High-Demand Occupations
    - Up to \$8,200.00 (Broward)
    - Approved Schools
  - Pell Grants
    - Up to \$5,920.00
    - [www.fafsa.ed.gov](http://www.fafsa.ed.gov)



# It's Your Move



- Reemployment Assistance Unaffected...
  - As long as you are attending an approved training you **WOULD NOT** have to look for work, be available for work, or acquire suitable work
  - Training Education and Guidance Letter
  - [www.opportunity.gov](http://www.opportunity.gov)

# It's Your Move



- Health Concerns
  - COBRA
    - Continued healthcare benefits for up to 18 months
    - Employee Benefits Security Administration (954) 424-4022; (866) 444-3272
    - [www.dol.gov/ebsa.org](http://www.dol.gov/ebsa.org)
  - Florida KidCare
    - Children from birth through 18
    - (954) 467-4885; (800) 821-5437
    - [www.floridakidcare.org](http://www.floridakidcare.org); [www.healthykids.org](http://www.healthykids.org)

# It's Your Move



- Stress Reduction
  - 24 hours/day, 7 days/week
  - Dial 211 on Telephone
    - Representative identifies needs and directs to an appropriate program
- Online Search
  - Visit [www.211.org](http://www.211.org); [www.211broward.org](http://www.211broward.org)



# It's Your Move



- Maintaining Household
  - Department of Children & Families (DCF)
    - Cash Assistance
    - Medicare Program
    - SNAP Benefits
- (866) 76-ACCES [22237]
- [www.myflorida.com/accessflorida](http://www.myflorida.com/accessflorida)

# It's Your Move



- Financial Well-Being
  - Keep Pension and 401K Plans
  - Contact Your Creditors
    - Payment restructuring due to hardship
  - Consolidated Credit Counseling
    - Non-profit; assists families to end financial crisis and money management problems through education and counseling
    - (800) 210-3481
    - budgetlounge.com
  - Federal Trade Commission (FTC)
    - [www.annualcreditreport.com](http://www.annualcreditreport.com)



# It's Your Move



- Explore Your Other Options
  - Are you an entrepreneur?
    - Do you like taking risks?
  - What type of business should you start?
    - What skills do you possess?
  - Do you have what it takes to begin your own business?
    - Where can you find support and resources?

# Part Two

- Reemployment Assistance (RA)
  - What is Reemployment Assistance?
  - Are you eligible to file for RA benefits?
  - How long do you receive these benefits?
  - Will other sources of income affect RA?
- RA Filing Procedures
  - How do you file for RA benefits?
  - What do you need when filing?
  - When should you file?
- RA Considerations



# Re-employment Assistance (RA)

- Employer contributes 100%
- Not a loan—temporary assistance
- Benefits provide money to workers unemployed through no fault of their own
- No guarantee that you will receive benefits
  - Eligibility is determined weekly
  - Weeks determined by wage earnings
  - \$832.00 - \$7,150.00 maximum benefit
- Amount \$32.00 - \$275.00/wk
- Other sources of income may cause RA ineligibility



# Re-employment Assistance (RA)

- Base Period

1<sup>st</sup> 4 Quarters of previous 5 Complete Quarters

2016	2017				2018			
OCT NOV DEC	JAN FEB MAR	APR MAY JUN	JUL AUG SEP	OCT NOV DEC	JAN FEB MAR	APR MAY JUN	JUL AUG SEP	OCT NOV DEC
Wage Earnings Base Period 10/1 – 9/30				X	Claim Filed			
	Wage Earnings Base Period 1/1 – 12/31			X	Claim Filed			
		Wage Earnings Base Period 4/1 – 3/31		X	Claim Filed			
			Wage Earnings Base Period 7/1 – 6/30		X	Claim Filed		

# Re-employment Assistance (RA)

- Payments which DO NOT affect RA
  - Sick/Vacation Pay
    - Accrued benefit during employment
  - Retirement/Social Security
    - As long as YOU are actively seeking employment



# Re-employment Assistance (RA)

- Payments which DO affect UC
  - Pension/Retirement/Social Security
    - If you take out money from the plan it is considered earned income
    - You must be Able, Available and Ready to work
- Severance Pay
  - Lump Sum or Weekly Payout
  - Once Severance is complete, RA benefits will begin
  - You can apply for RA Benefits at the beginning of your separation or when Severance Benefits end



# RA Filing Procedures

- There is no longer a RA office
- Ways to file your claim
  - Internet Only
    - [www.floridajobs.org](http://www.floridajobs.org)
    - Available 24 hrs./day; 7 days/week
    - Click on: “File a Reemployment Assistance Claim”
    - On-line skills assessment
  - Phone (for information purposes)
    - (800) 204-2418
    - Monday – Friday, 8:00 a.m. – 5:00 p.m.
    - Land lines preferred; cell phones can lose connection



# RA Filing Procedures



- Must wait until layoff date to file
- RA not automatic; must file claim to be processed for eligibility
- Claim week begins Sunday, 12:00 a.m. and ends Saturday, 11:59 p.m.
- The week you file is considered a non-paid “waiting week”



# RA Filing Procedures



- Claim is valid for one (1) year
  - If you gain and then lose a new job prior to your benefit year ending, you can reactivate your claim without another “waiting week”
- It takes 3 - 4 weeks to gain RA approval and receive your first benefit payment
  - Payments follow every two weeks
  - Payment Options
    - Direct Deposit
    - State Issued Visa Card
    - 10% withholding for federal taxes

# RA Filing Procedures



- Information needed to file
  - Social security number
  - Last pay stub
    - Employers name/address
    - Employment dates/wages for last 18 months of employment
  - Driver's license/state ID
  - Alien registration number/work permit
  - Bank account/routing number for direct deposit
  - Approximate filing time is 30 – 45 minutes

# RA Filing Procedures



- Requirements

- Must declare income from temporary, part-time, and seasonal work
  - Claim for RA while working a temporary job to keep your claim active
  - Report expected gross income for the period worked—NOT when it's paid
  - Will not get RA for a claim week you earn more than the weekly benefit amount
  - Fraud is a third degree felony; you may receive a fine of \$5,000/week

# RA Filing Procedures

- Requirements (continued)
  - You must be able and available to work
  - Actively looking for full-time employment
    - Must have at least five (5) contacts a week
    - Visit a Workforce Career Center weekly
    - Keep a job search log
    - Certify job search activity every two (2) weeks on-line at [www.floridajobs.org](http://www.floridajobs.org)
  - You must be ready and willing to accept suitable work



# RA Filing Procedures

- Before accepting a job offer
  - Make sure it is something you want
    - Suits your personal work, salary, and location requirements
    - You CANNOT refuse an offer of suitable work
    - If you accept a job and then quit, you may jeopardize your ability to receive Reemployment Assistance benefits



# Part Three

- **Goals**
- **Vision Boards**
- **Structural Tension Chart**



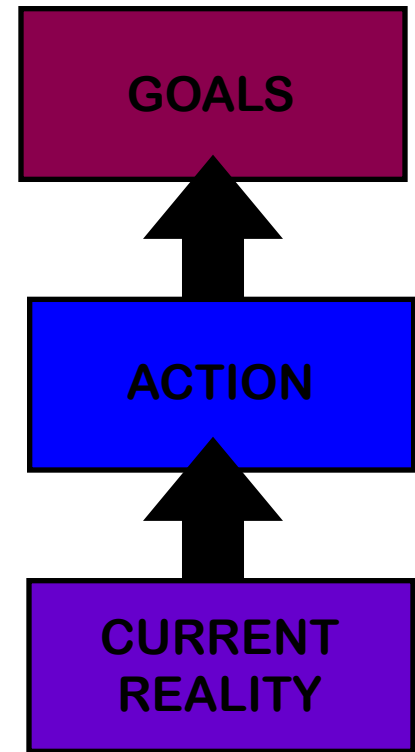
# Goals

- Vision Boards
  - Prepare a board with images and goals showing what you want for yourself
    - I am getting the job of my dreams
    - I have a loving, supportive partner
    - I am fit and healthy
    - I have the freedom to choose powerfully
    - I can see abundance and prosperity surrounding me
  - Focus on these goals and determine how to get there—baby step by baby step



# Goals

- Structural Tension Chart
  - Find tools and support systems which help to keep you moving forward
  - Tension is created by the difference between your GOAL and your CURRENT REALITY
  - Tension is relieved by your ACTION PLAN
    - The Path of Least Resistance  
*Robert Frisk*





# Reminders

- Your employer cares about you; that's why we're here
- The information packets you have received today contain materials which will make your career transition easier
- This information is PRICELESS!!!



# Reminders

- CareerSource Broward is here for you
- We're committed to provide you with quality services which will help you to shape your future and enjoy your life
- If you have additional questions, please contact your nearest CareerSource Broward Career Center; there is always someone who can help



# Inspirational Thoughts

“People are always blaming their circumstances for what they are. I don’t believe in circumstances. The people who get on in this world are the people who get up and look for the circumstances they want, and if they can’t find them, MAKE THEM.”

*George Bernard Shaw*





# Thank You

